

Chest Freezer

FCCS161Q W

15.6 Cu. Ft. Commercial,
Food Service Grade



Signature Features

NSF®-Certified For Food Service Applications

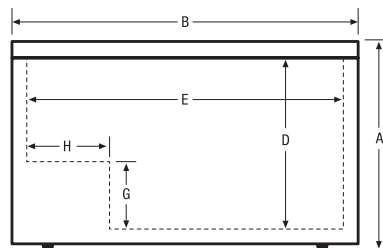
Sealed Cabinet Interior For Easy Cleaning

Cold control capable of +10 degrees Fahrenheit for hand dipping ice cream

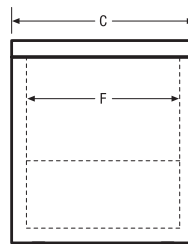
Heavy-Duty Casters

Heavy-Duty Cooling System, NSF®-Certified Performance

Defrost Drain



Front



Side

Product Dimensions

Exterior -	
A - Height (Including Casters)	36-11/16"
B - Width	55-3/4"
C - Depth (Including Hinges)	29-1/2"
Interior -	
D - Height	28-3/4"
E - Width	48-3/4"
F - Depth	20-1/2"
G - Height	10-7/16"
H - Width	9-7/16"

More Easy-To-Use Features

NSF®-Certified Thermometer

2 Heavy-Duty, NSF®-Certified Wire Storage Baskets

Accessories

NSF®-Certified Wire Freezer Basket ¹	297404901
NSF®-Certified Thermometer	297070101
Basket Dividers	297118000

Specifications

Total Capacity (Cu. Ft.)	15.6
Power Supply Connection Location	Left Bottom Rear
Voltage Rating	115V
Shipping Weight (Approx.)	179 Lbs.

ENERGY STAR®

NSF® International Certification



Available in:



White (W)

¹One included, holds up to five baskets. Accessories information available on the web at frigidaire.ca